

TECHNICAL RIDER KULTURFABRIK LYSS - HALL

Capacity

Size	200m ² / 239 square-yard
Standing capacity	700 (540 ground floor / 160 gallery)
Seating capacity	ca. 250 (200 ground floor / 50 gallery)
Banqueting hall	ca. 150 (ground floor only)

Stage

Dimensions	Width: 10.2 m / 33.5 ft Depth: 4.95 m / 16.25 ft Clear height: 4.5 m / 14.8 ft Stage height: 1 m / 3.3 ft
------------	--



Stage expansions:	Platforms 2x1 m / 1x1 m / 2x0.5 m (6.6x3.3 ft / 3.3x3.3 ft / 1.5x6.6 ft) with adjustable legs (20-90 cm / 7.9-35.4 inches) available.
-------------------	---

Stage rig:	1 Rig for whole stage / floor light, see Technical Specifications
------------	--

Stage curtains:	Black / fireproof: 1 rear panel, 2 side panels, front (U-form)
-----------------	--

Main curtain front:	anthracite / fireproof (electrical pulley)
---------------------	---

Crowd Barriers:	We do not have crowd barriers.
-----------------	-----------------------------------

Backstage

2 backstage areas are situated on the first floor behind the stage, including sanitary installations with toilet, urinal and shower. Backstage areas include Wi-Fi and network connections.

Logistics

A covered access zone is located immediately behind the stage (door width 1.84 m / 6 feet). A ramp allows for rolling stock to be transported on stage.



TECHNICAL SPECIFICATIONS

Version february 2017, specifications subject to change!

SOUND

FOH (digital or analog, choice on demand)

- SET 1: 1 FOH-Konsole Soundcraft VI1
(32 Inputs / 16 Outputs)
- SET 2: 1 FOH-Konsole Yamaha LS-9
(32 Inputs / 16 Outputs)
- SET 3: 1 FOH-Konsole Soundcraft MH3
(44/12/8/2)

Mikes & DI (stage standard)

- 1 Mike Tool-Case
- 5x SHURE SM58
- 1x SHURE SM58 switch
- 2x SHURE SM58A beta
- 5x SHURE SM57
- 1x SHURE SM52 beta
- 1x SHURE SM91 beta
- 3x SHURE SM81 condenser
- 3x Sennheiser e604 clip
- 1x Sennheiser e606 brick
- 1x Sennheiser e906 brick
- 8x BSS AR133 DI-Box

Stands (stage standard)

- 1 Stand Tool-Case
- 14x K&M boom stand
- 6x K&M tall stand
- 2x K&M small stand

Monitoring 8 Way Set

- 6x SEEBURG M3 wedge 800W
- 1x M181T 18" Sub
- 2x SEEBURG TSM15 wedge 500W
- 2x LAB groups Q6000 4 x 1500W
power amp

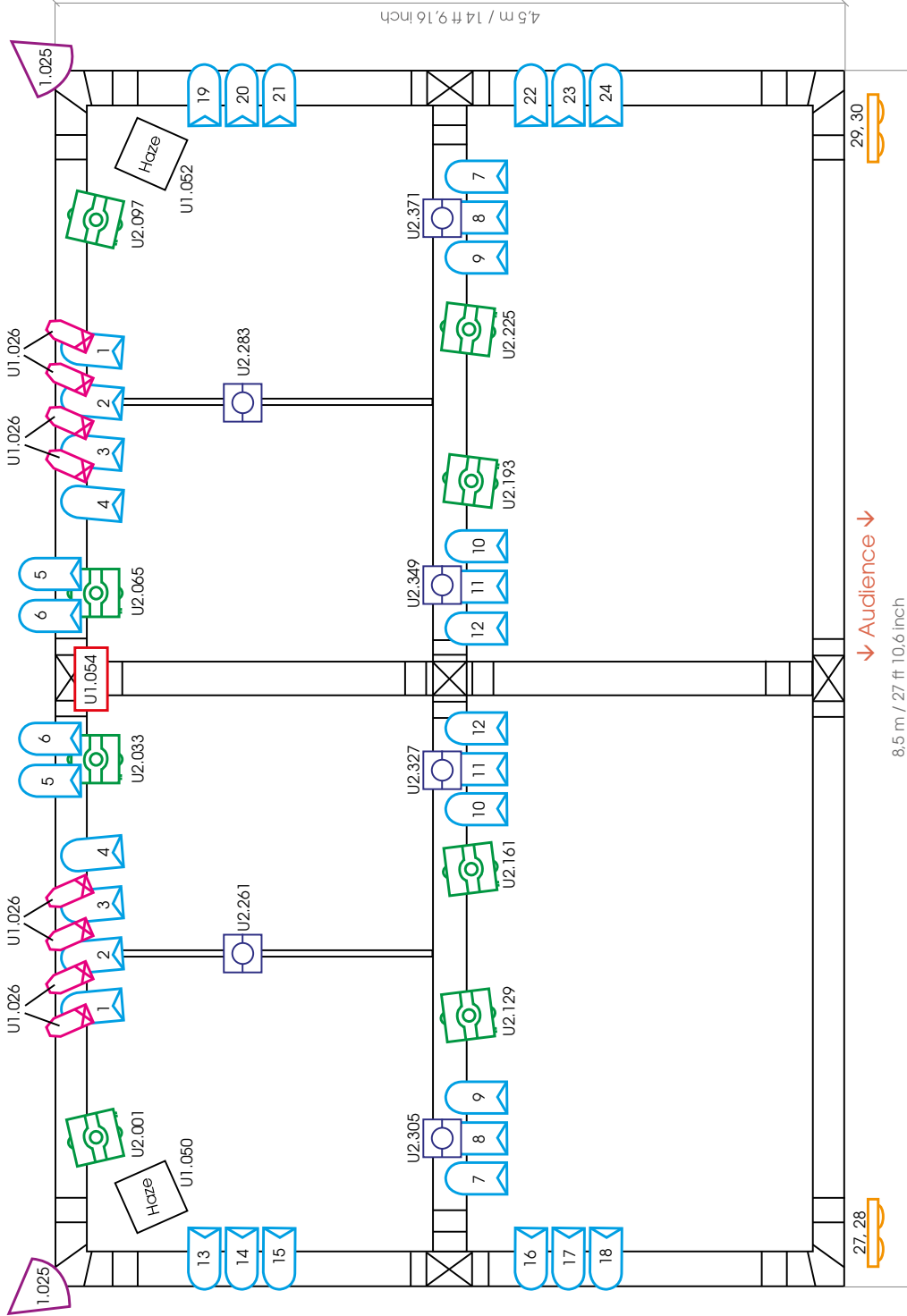
PA-System 1 Very High Definition System (flight version)

- 1 KV2 AUDIO VHD 2.0 System
- 2x KV2 VHD 2.0 TOP 3 Way
2x12"/2x6.5"/1.4"
- 8x KV2 VHD 4.18 SUB 18"
- 2x KV2 VHD 2000 6MHz digitally
controlled AMP
- 2x KV2 VHD 3200 digital AMP
- 1x KV2 VHD LineDriver 50Ohm
- 1x KV2 EX10 activ NEARFILL 10"/1.4"
- 2x Flycradle for VHD2.0
- 1x Flycradle for EX10

Cable set audio power / signal / speaker

- 1 cable set T13 / XLR / speakon /
Adapter 140 pcs.

**RIGG-PLAN KULTURFABRIK HALL
 STAGE TRUSS**



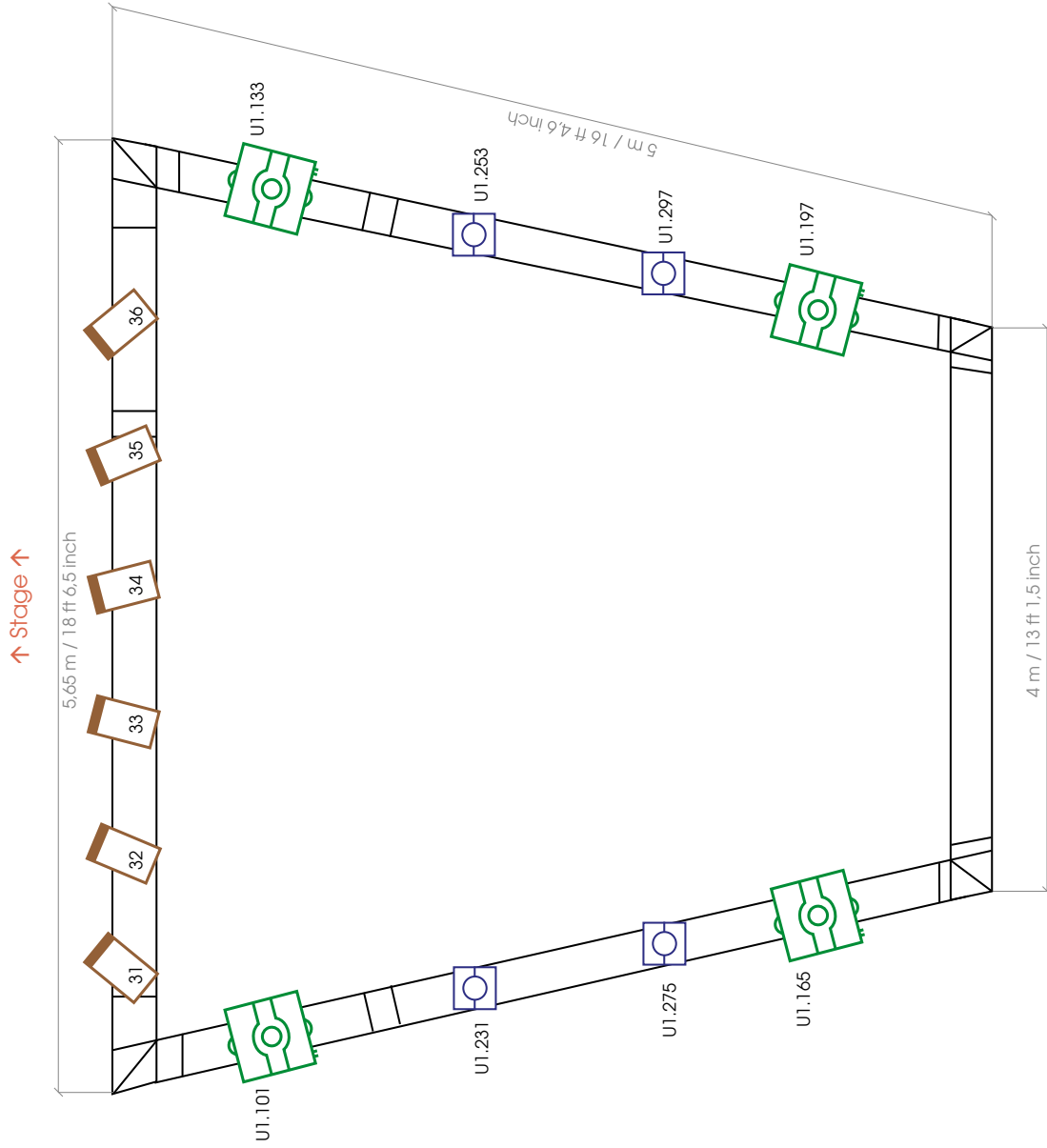


KULTURFABRIK LYSS
WERDTSTRASSE 17
3250 LYSS

WWW.KUFA.CH
INFO@KUFA.CH

TEL: 032 384 79 40
FAX: 032 384 79 412

RIGG-PLAN KULTURFABRIK HALL DISCO TRUSS



WERDTSTRASSE 17 | 3250 LYSS | WWW.KUFA.CH
KULTURFABRIK KUFA LYSS



RIGG-PLAN KULTURFABRIK HALL

Declaration



2x 4 Par 36 ACL



36x Par 64 CP61 (all in U1)



6x 1kW Frensel



12x ROBE Robin Viva CMY (Mode 1/32 Channels)



4x ROBE Robin LED Beam 150 (Mode 1/22 Channels)



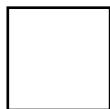
2x Blinder 4x



1x Atomix 3000 Strobe



2x Clamlight 1kW



2x Haze Base - base*hazer*pro

- 1x MA Dot2 XL-F (controlling device)
- 12x additional dimmer channels
- 4x DMX splitter with a line to FOH
- 4x Stage Lift (electrical chain pull) 500 kg
- 4x Disco Truss Lift (electrical chain pull) 250 kg

PATCHLIST LIGHT HALLE

Dimmable lights

Patch	What	Mode	Where
1.001	PAR 64	-	Stage rig - Backtruss
1.002	PAR 64	-	Stage rig - Backtruss
1.003	PAR 64	-	Stage rig - Backtruss
1.004	PAR 64	-	Stage rig - Backtruss
1.005	PAR 64	-	Stage rig - Backtruss
1.006	PAR 64	-	Stage rig - Backtruss
1.007	PAR 64	-	Stage rig - Midtruss
1.008	PAR 64	-	Stage rig - Midtruss
1.009	PAR 64	-	Stage rig - Midtruss
1.010	PAR 64	-	Stage rig - Midtruss
1.011	PAR 64	-	Stage rig - Midtruss
1.012	PAR 64	-	Stage rig - Midtruss
1.013	PAR 64	-	Stage rig - Sidetruss back left
1.014	PAR 64	-	Stage rig - Sidetruss back left
1.015	PAR 64	-	Stage rig - Sidetruss back left
1.016	PAR 64	-	Stage rig - Sidetruss front left
1.017	PAR 64	-	Stage rig - Sidetruss front left
1.018	PAR 64	-	Stage rig - Sidetruss front left
1.019	PAR 64	-	Stage rig - Sidetruss back right
1.020	PAR 64	-	Stage rig - Sidetruss back right
1.021	PAR 64	-	Stage rig - Sidetruss back right
1.022	PAR 64	-	Stage rig - Sidetruss front right
1.023	PAR 64	-	Stage rig - Sidetruss front right
1.024	PAR 64	-	Stage rig - Sidetruss front right
1.025	Clamlight	-	Stage rig - Backtruss
1.026	ACL's	-	Stage rig - Backtruss
1.027	Blinder 1 L	-	Stage rig - Frontruss
1.028	Blinder 1 R	-	Stage rig - Frontruss
1.029	Blinder 2 L	-	Stage rig - Frontruss
1.030	Blinder 2 R	-	Stage rig - Frontruss
1.031	Front 1 (Fresnel)	-	Stage rig - Frontruss
1.032	Front 2 (Fresnel)	-	Stage rig - Frontruss
1.033	Front 3 (Fresnel)	-	Stage rig - Frontruss
1.034	Front 4 (Fresnel)	-	Stage rig - Frontruss
1.035	Front 5 (Fresnel)	-	Stage rig - Frontruss
1.036	Front 6 (Fresnel)	-	Stage rig - Frontruss
1.037	Free Dim Channel	-	On stage
1.038	Free Dim Channel	-	On stage
1.039	Free Dim Channel	-	On stage
1.040	Free Dim Channel	-	On stage
1.041	Free Dim Channel	-	On stage
1.042	Free Dim Channel	-	On stage
1.043	Free Dim Channel	-	Disco rig
1.044	Free Dim Channel	-	Disco rig
1.045	Free Dim Channel	-	Disco rig
1.046	Free Dim Channel	-	Disco rig
1.047	Free Dim Channel	-	Disco rig
1.048	Free Dim Channel	-	Disco rig
1.049	Free Channel	-	-
1.050	Free Channel	-	-
1.050	Haze Base - base*hazer*pro	2 Ch.	On stage
1.052	Haze Base - base*hazer*pro	2 Ch.	On stage
1.054	Strobe Atomic 3000	4 Ch.	Stage rig - Backtruss

1.058 up to 1.100 are free channels

PATCHLIST LIGHT HALLE

Movable lights

Patch	What	Mode	Where
2.001	Robe Robin Viva CMY	1 (32 Ch.)	Stage rig - Backtruss
2.033	Robe Robin Viva CMY	1 (32 Ch.)	Stage rig - Backtruss
2.065	Robe Robin Viva CMY	1 (32 Ch.)	Stage rig - Backtruss
2.097	Robe Robin Viva CMY	1 (32 Ch.)	Stage rig - Backtruss
2.129	Robe Robin Viva CMY	1 (32 Ch.)	Stage rig - Midtruss
2.161	Robe Robin Viva CMY	1 (32 Ch.)	Stage rig - Midtruss
2.193	Robe Robin Viva CMY	1 (32 Ch.)	Stage rig - Midtruss
2.225	Robe Robin Viva CMY	1 (32 Ch.)	Stage rig - Midtruss
1.101	Robe Robin Viva CMY	1 (32 Ch.)	Disco rig - Sidetruss left
1.133	Robe Robin Viva CMY	1 (32 Ch.)	Disco rig - Sidetruss right
1.165	Robe Robin Viva CMY	1 (32 Ch.)	Disco rig - Sidetruss left
1.197	Robe Robin Viva CMY	1 (32 Ch.)	Disco rig - Sidetruss right
2.393 up to 2.512 are free channels			
2.261	Robe Robin LED Beam 150	1 (22 Ch.)	Stage rig - Pipe
2.283	Robe Robin LED Beam 150	1 (22 Ch.)	Stage rig - Pipe
2.305	Robe Robin LED Beam 150	1 (22 Ch.)	Stage rig - Midtruss
2.327	Robe Robin LED Beam 150	1 (22 Ch.)	Stage rig - Midtruss
2.349	Robe Robin LED Beam 150	1 (22 Ch.)	Stage rig - Midtruss
2.371	Robe Robin LED Beam 150	1 (22 Ch.)	Stage rig - Midtruss
1.231	Robe Robin LED Beam 150	1 (22 Ch.)	Disco rig - Sidetruss left
1.253	Robe Robin LED Beam 150	1 (22 Ch.)	Disco rig - Sidetruss right
1.275	Robe Robin LED Beam 150	1 (22 Ch.)	Disco rig - Sidetruss left
1.297	Robe Robin LED Beam 150	1 (22 Ch.)	Disco rig - Sidetruss right
1.319 up to 1.512 are free channels			

DMX Line 3 & 4 are completely free and ready for your light.