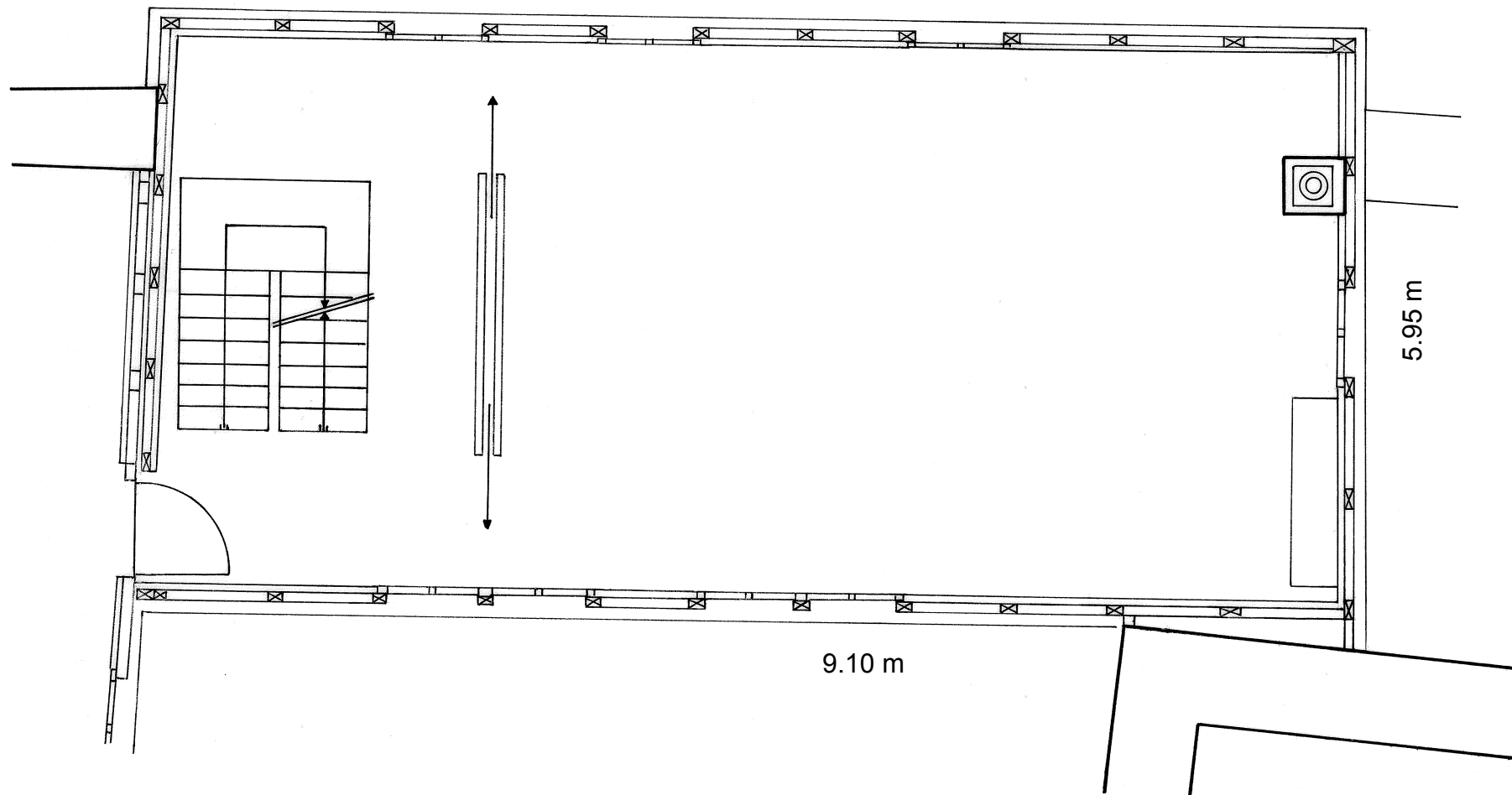


BÜRGER-STUBE  
ZWISCHENTRAKT 1. OBERGESCHOSS

54 m<sup>2</sup>

20-40 Personen



nicht masstäblich

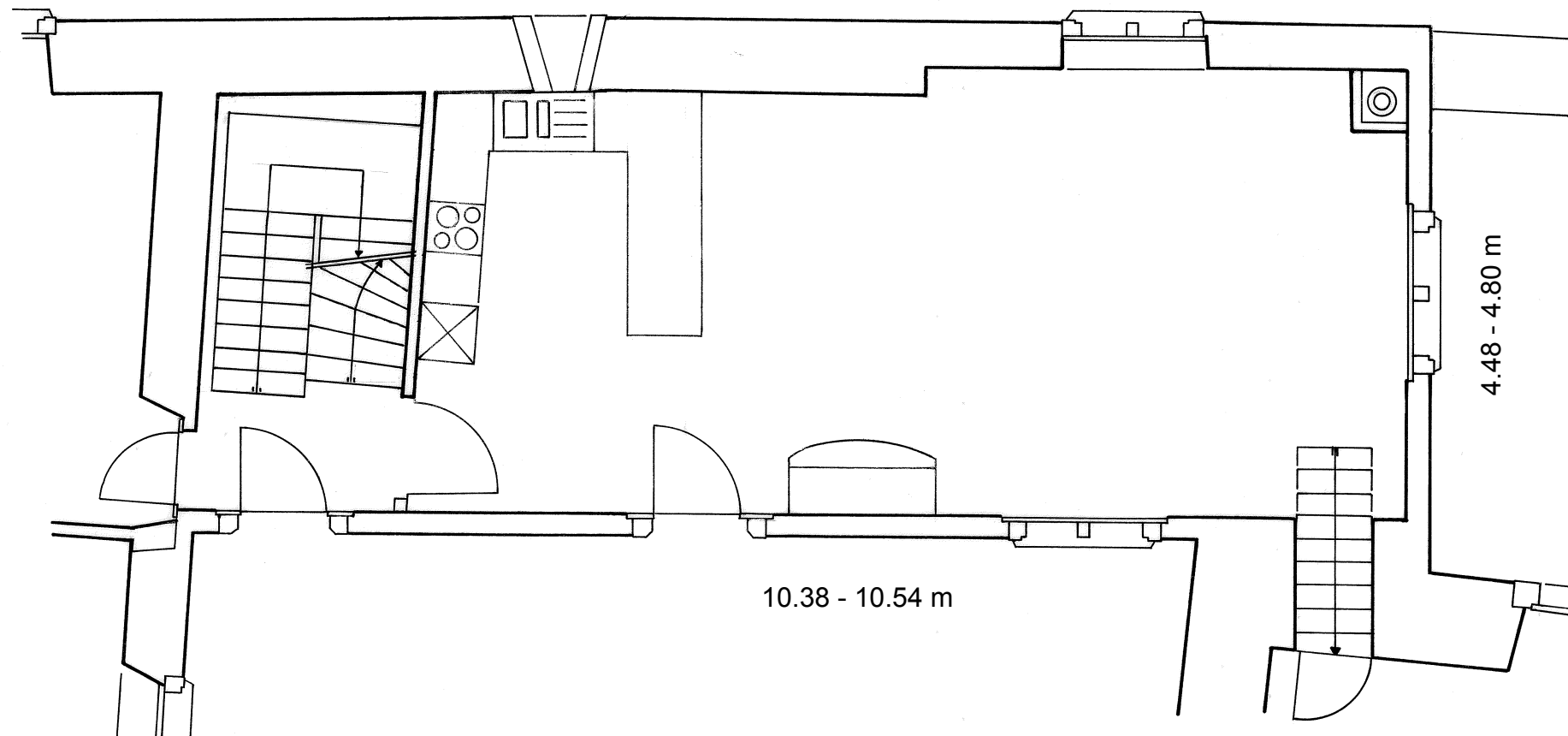
# CAFETERIA

ZWISCHENTRAKT

ERDGESCHOSS

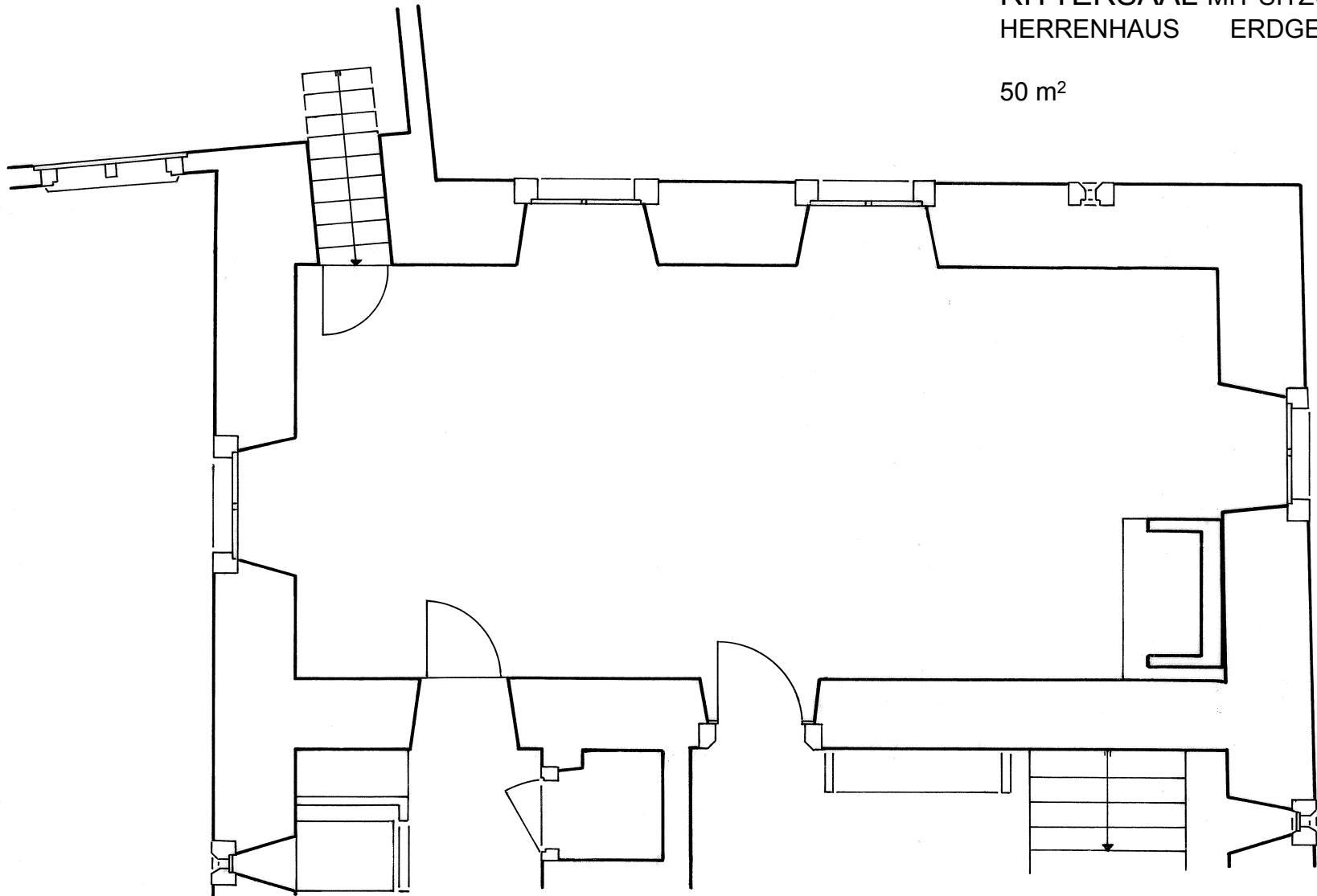
49 m<sup>2</sup>

20-30 Personen



RITTERSAAL MIT SITZGRUPPE  
HERRENHAUS ERDGESCHOSS

50 m<sup>2</sup>



4.75 - 4.80 m

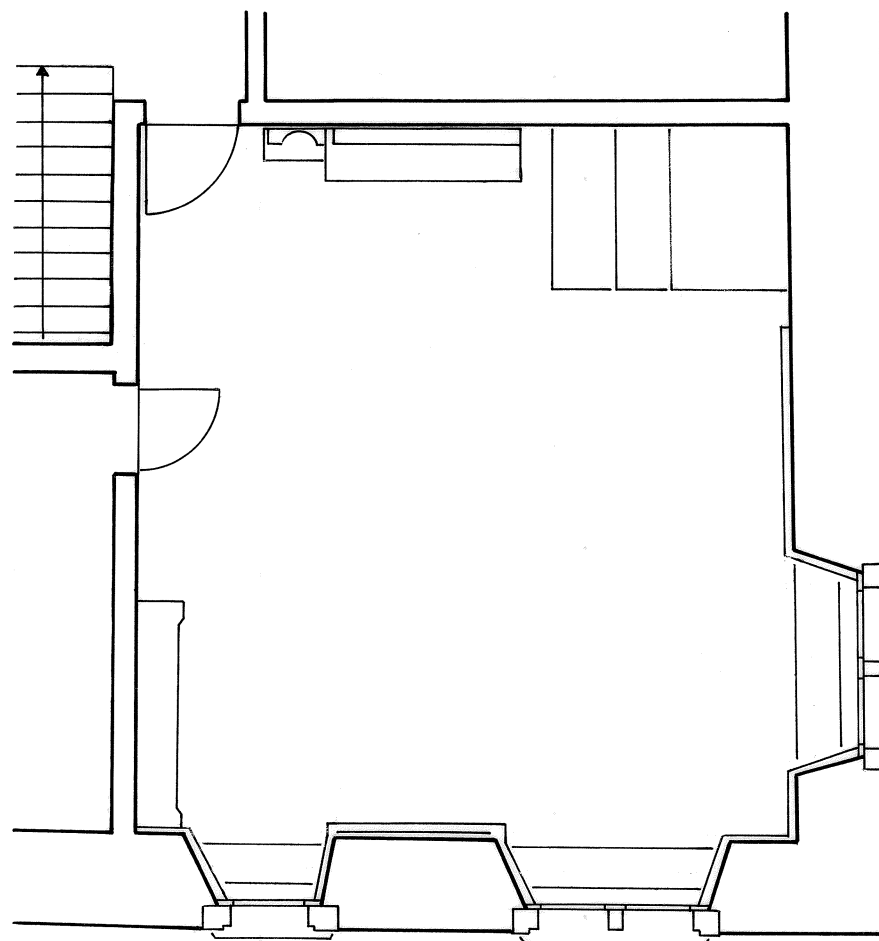
10.38 m

# PFYFFER-STUBE

HERRENHAUS 1. OBERGESCHOSS

39 m<sup>2</sup>

16-24 Personen

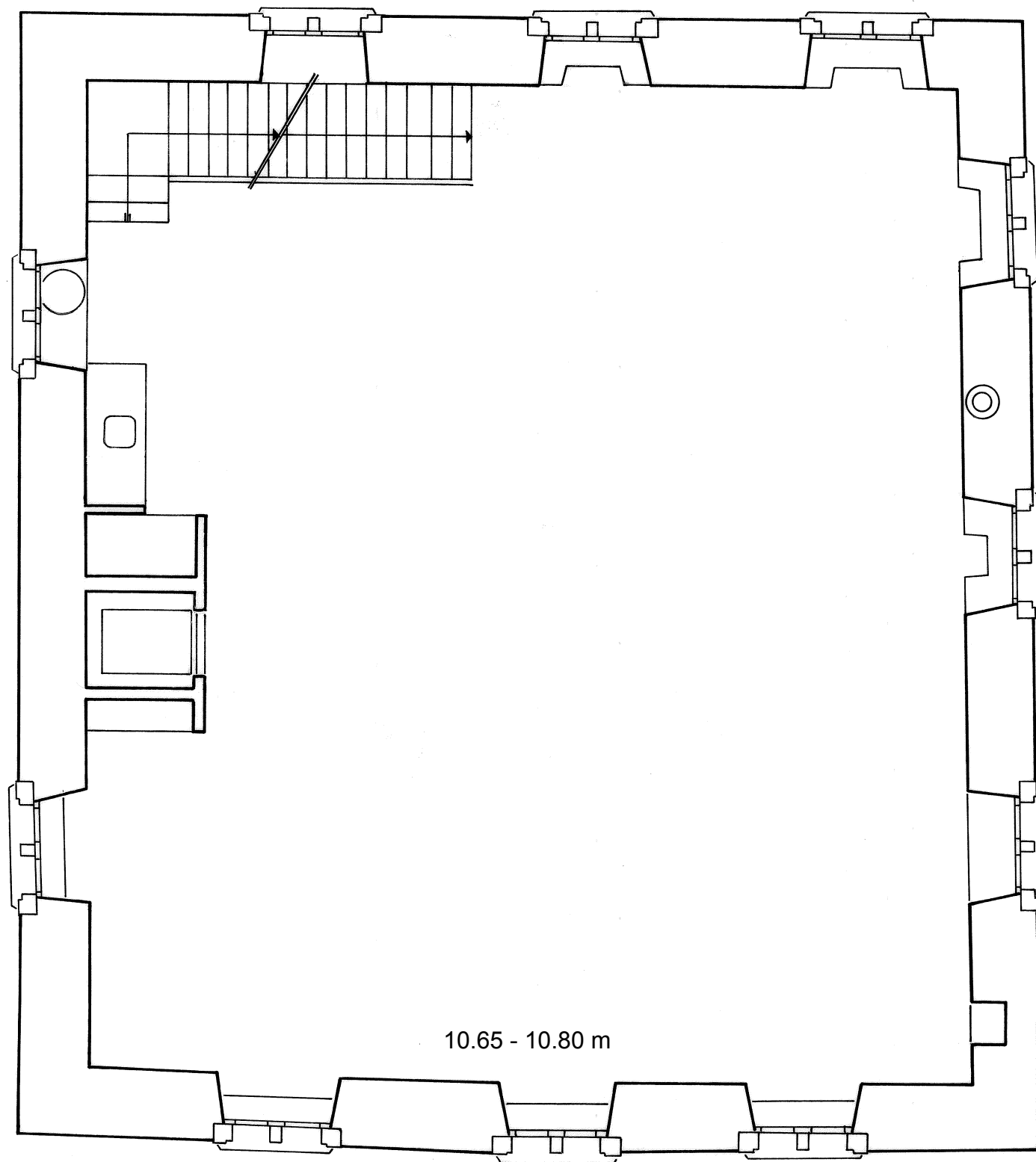


6.15 m

6.33 - 6.44 m

FEER-SAAL  
HERRENHAUS  
2. OBERGESCHOSS

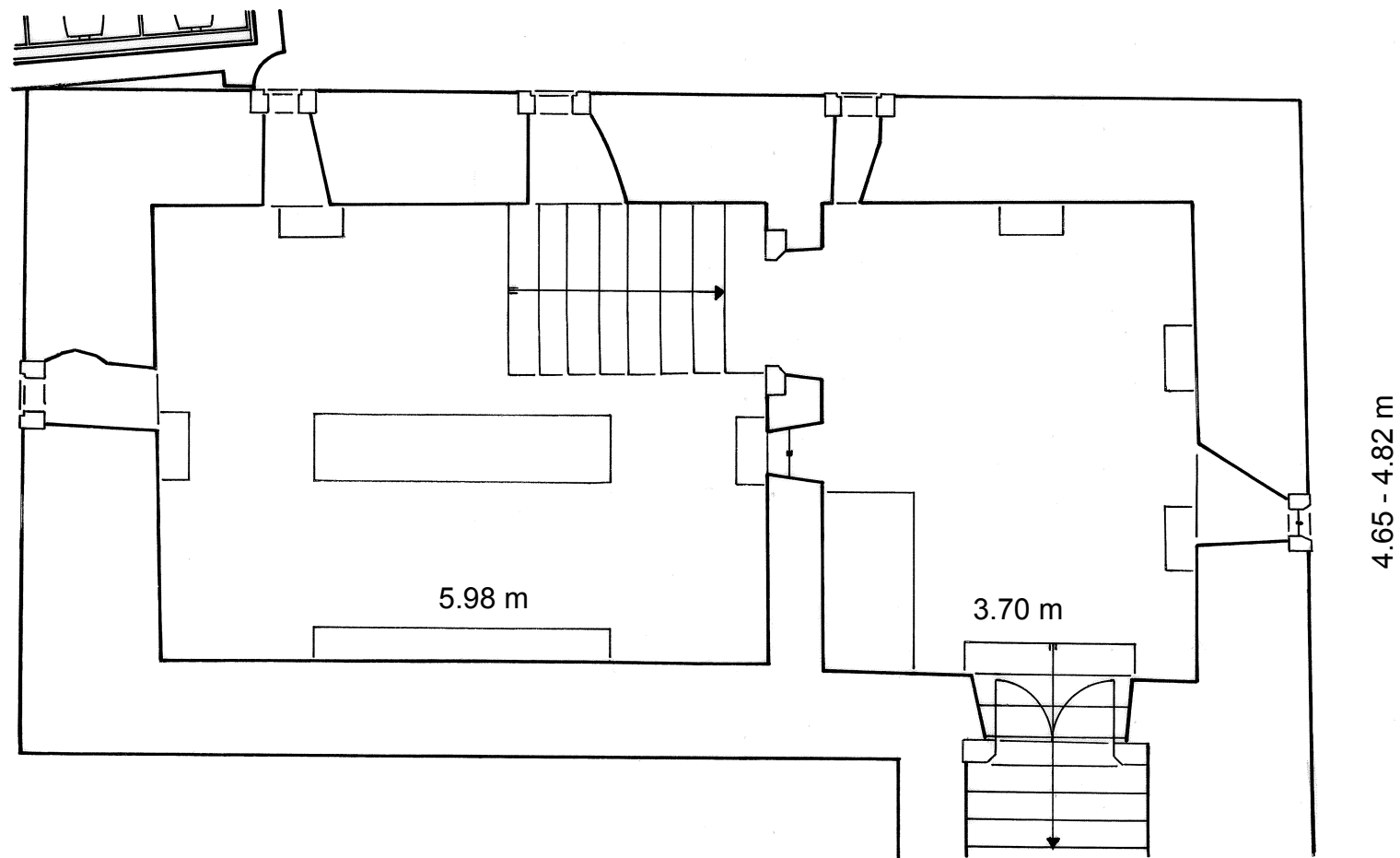
127 m<sup>2</sup>  
50-100 Personen



nicht masstäblich

JAGTKELLER MIT BAR FÜR APÉRO  
HERRENHAUS      UNTERGESHOSS

33 + 17 m<sup>2</sup>

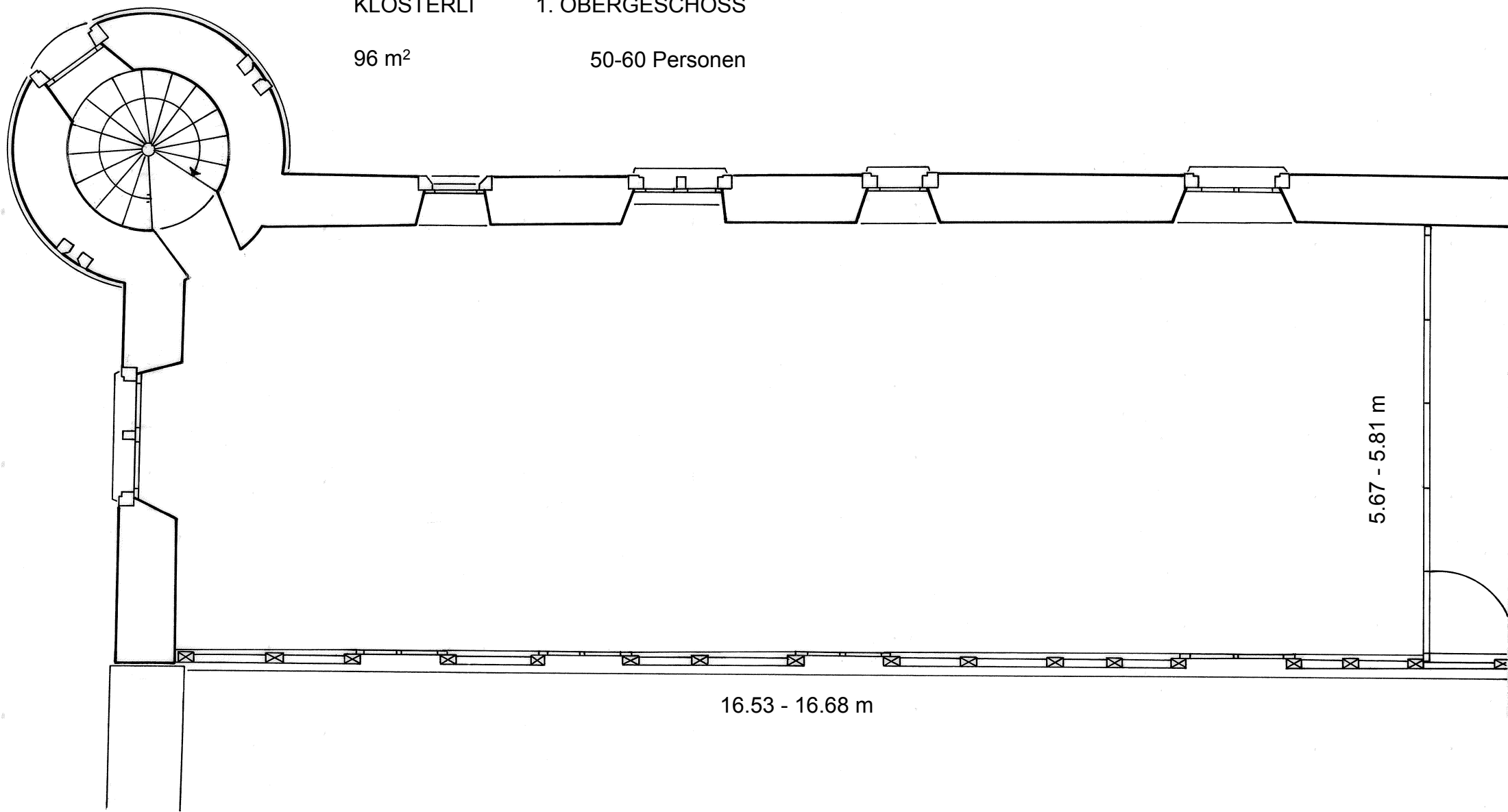


# KLÖSTERLI 1

KLÖSTERLI 1. OBERGESCHOSS

96 m<sup>2</sup>

50-60 Personen



5.67 - 5.81 m

16.53 - 16.68 m

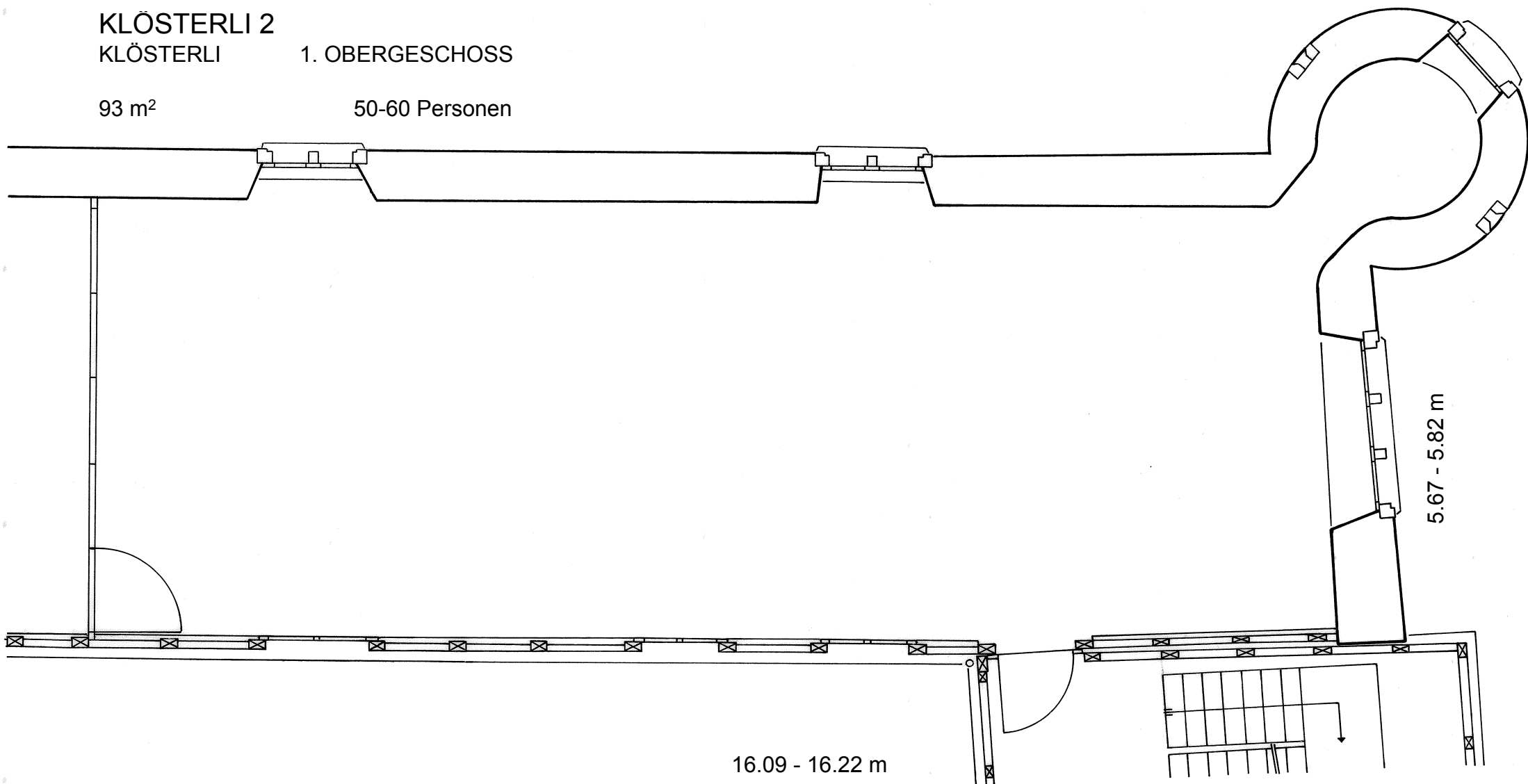
KLÖSTERLI 2

KLÖSTERLI

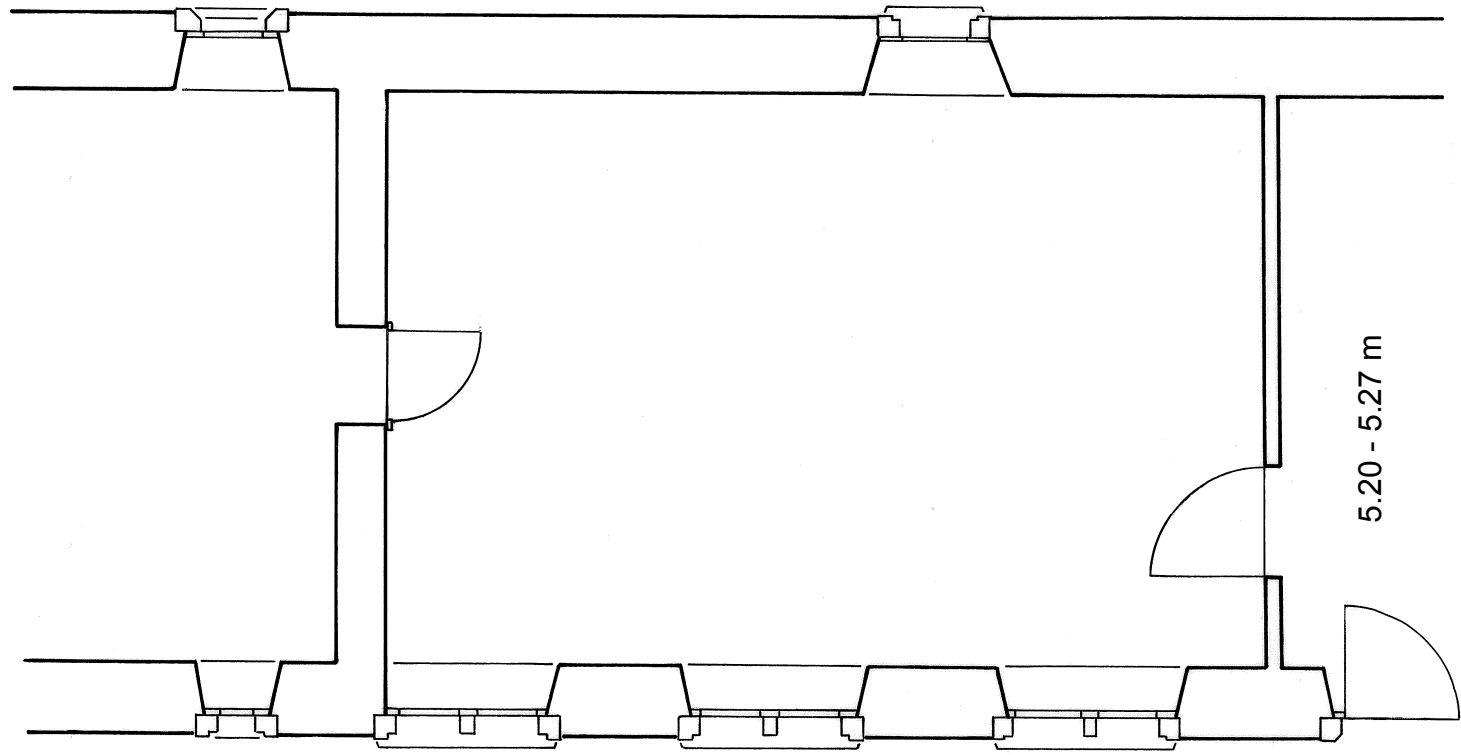
1. OBERGESCHOSS

93 m<sup>2</sup>

50-60 Personen





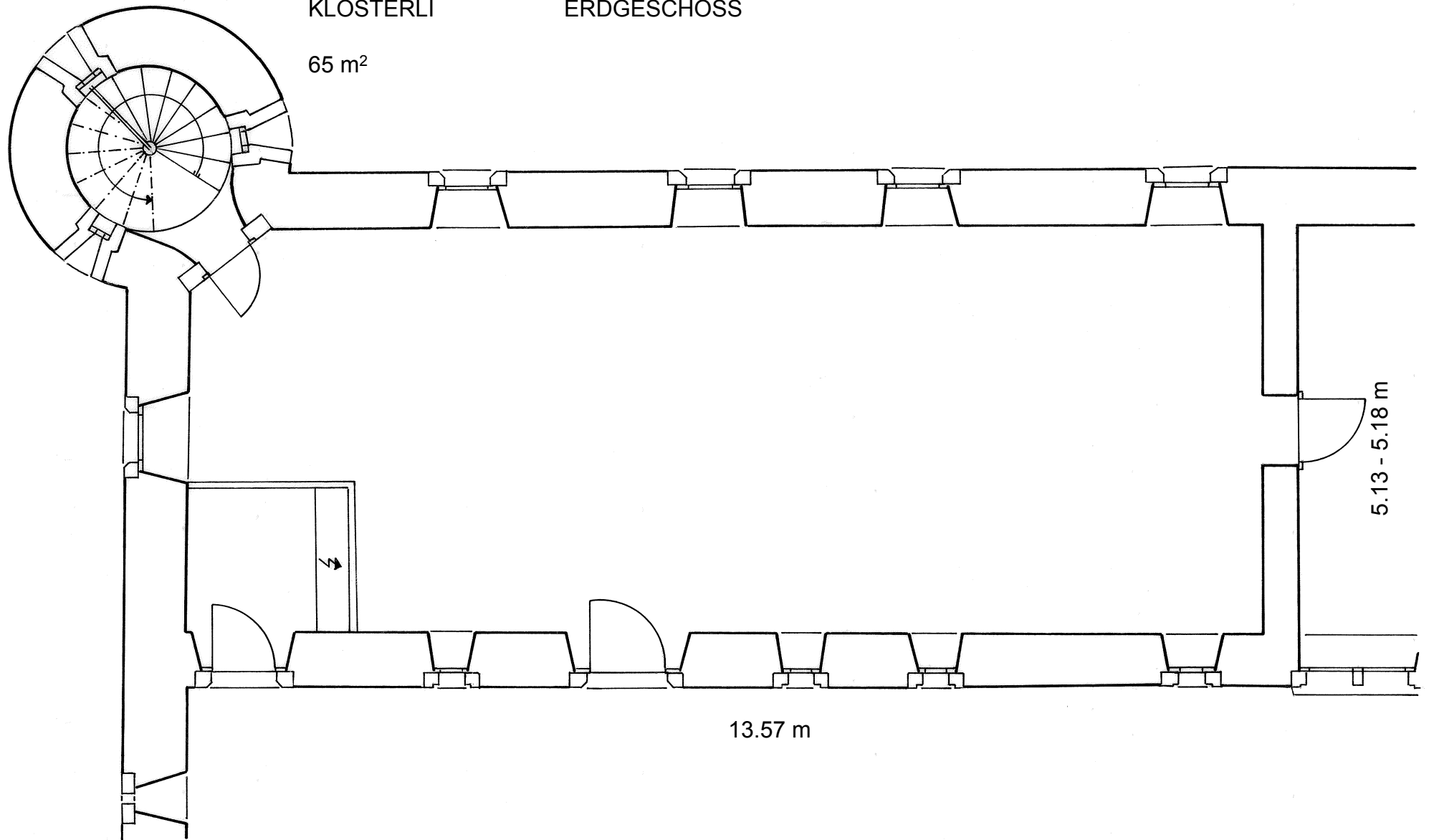


8.05 m

5.20 - 5.27 m

AUSSTELLUNG 1  
KLÖSTERLI ERDGESCHOSS

65 m<sup>2</sup>



13.57 m

5.13 - 5.18 m

nicht masstäblich

AUSSTELLUNG DOKUMENTATION SCHLOSS WYHER  
HERRENHAUS 1. OBERGESCHOSS

26 m<sup>2</sup>

